

A PLAT OF
A REPLAT OF LOTS B AND C
OF GRAN PARK AT PORT SALERNO PHASE I
 LYING IN THE HANSON GRANT AND BEING A PORTION OF GRAN PARK AT PORT SALERNO PHASE I
 AS RECORDED IN PLAT BOOK 12 PAGE 1
 OF THE PUBLIC RECORDS OF MARTIN COUNTY, FLORIDA.

NOVEMBER, 1990

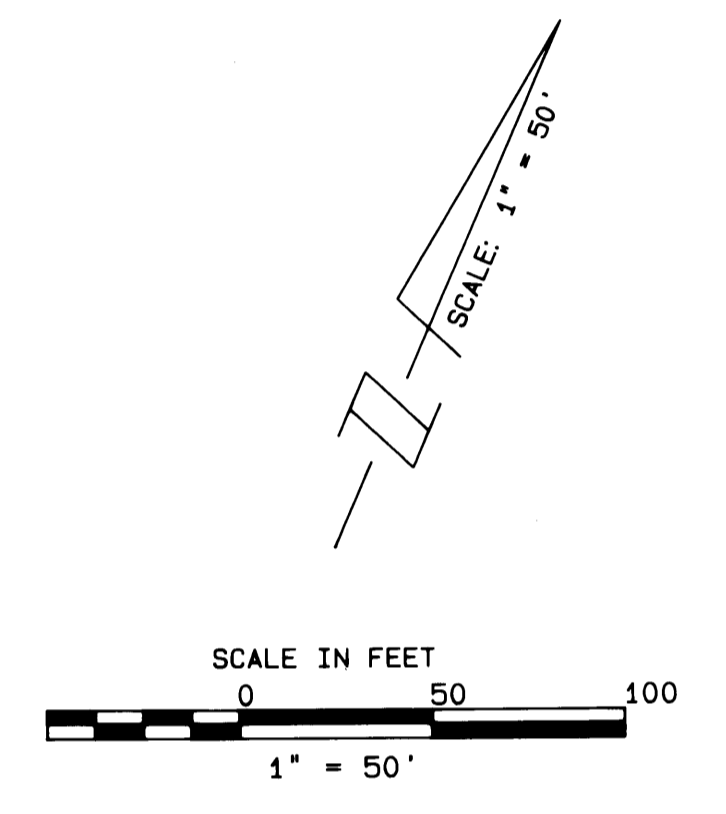
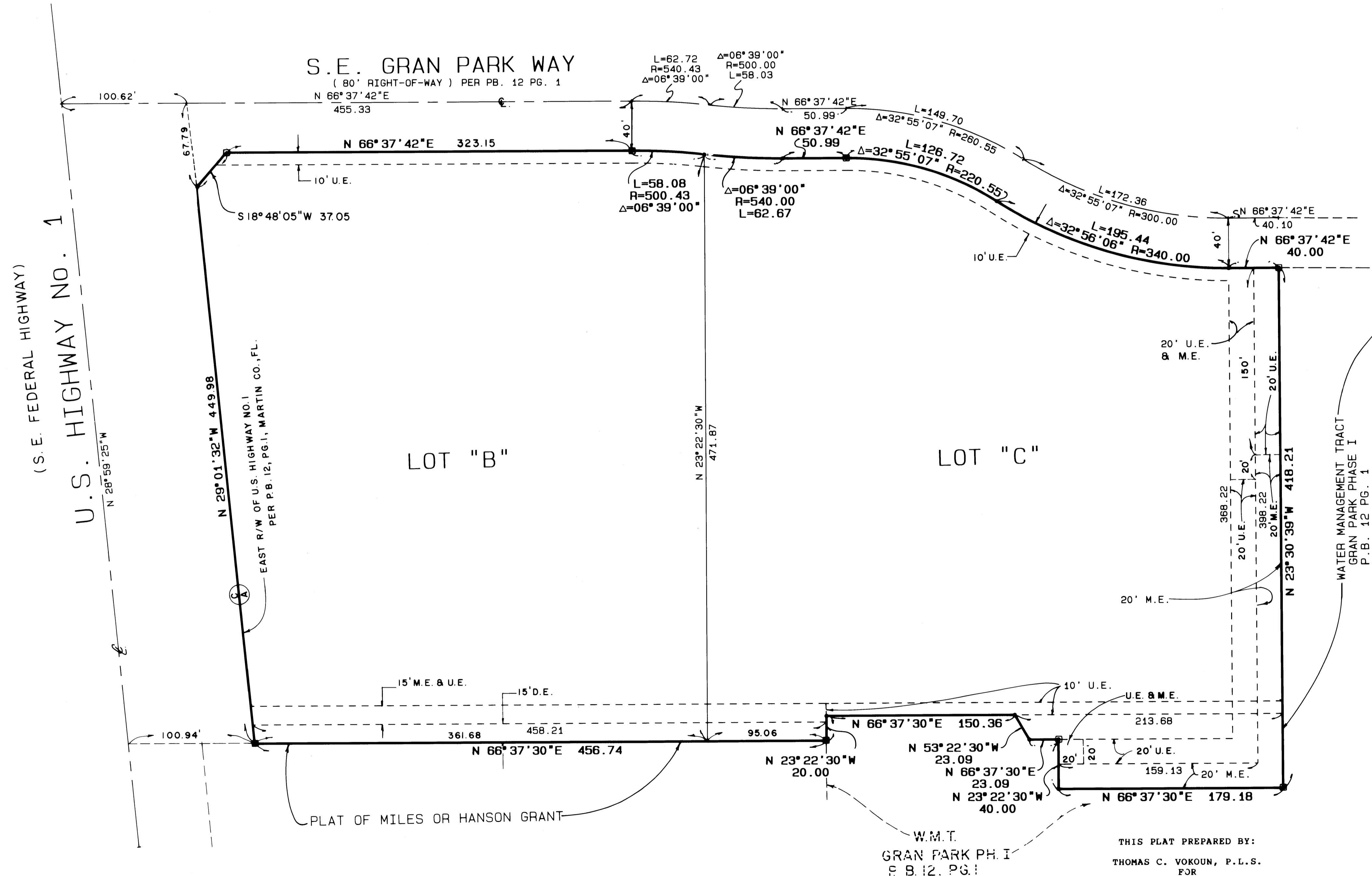
I, MARSHA STILLER, CLERK OF THE CIRCUIT COURT OF MARTIN COUNTY, FLORIDA, HEREBY CERTIFY THAT THIS PLAT WAS FILED FOR RECORD IN PLAT BOOK 12, PAGE 26, MARTIN COUNTY, FLORIDA, PUBLIC RECORDS, THIS _____ DAY OF _____, 1990.

MARSHA STILLER,
 CLERK CIRCUIT COURT
 MARTIN COUNTY, FLORIDA.

BY: _____
 DEPUTY CLERK

FILE NO. _____

(CIRCUIT COURT SEAL)



- LEGEND**
- DENOTES P. R. M. PERMANENT REFERENCE MONUMENT FOUND
 - DENOTES P. R. M. PERMANENT REFERENCE MONUMENT SET
 - D.E. DENOTES DRAINAGE EASEMENT
 - M.E. DENOTES MAINTENANCE EASEMENT
 - U.E. DENOTES UTILITY EASEMENT
 - Ⓢ DENOTES "CONTROL OF ACCESS" NO VEHICULAR ACCESS WITHOUT APPROVAL OF MARTIN COUNTY BOARD OF COUNTY COMMISSIONERS.

LINDAHL, BROWNING, FERRARI & HELLSTROM, INC. CONSULTING ENGINEERS, PLANNERS & SURVEYORS P.O. BOX 222 2865 15th AVENUE JUPITER, FLORIDA 33448 VERO BEACH, FLORIDA 32960		2	2
2225 COLONIAL BLVD. SUITE 201 FORT PIERCE, FLORIDA 34950	10 CENTRAL PARKWAY SUITE 420 STUART, FLORIDA 34994		